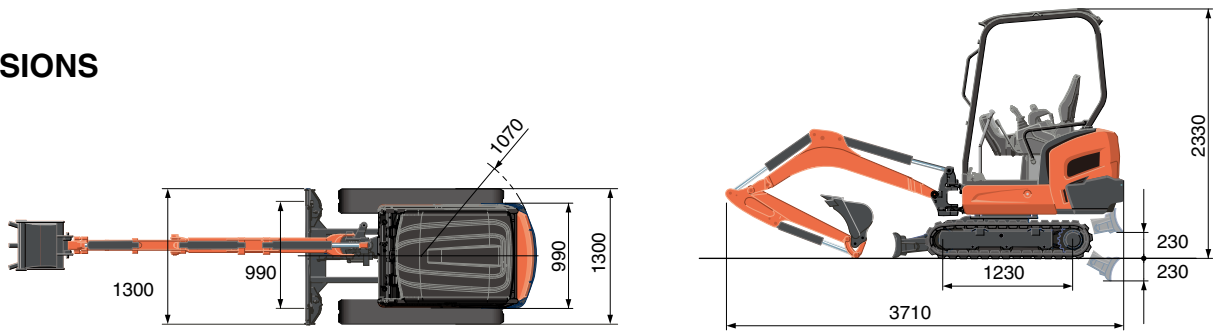


SPECIFICATIONS

Model				KX018-4
Type of ROPS / FOPS				Canopy
Type of tracks				Rubber
Engine	Model			D902-E4-BH-4EU
	Output (SAE J1995 gross)		HP (kW)/rpm	16.1 (12.0) / 2300
	Output (SAE J1349 net)		HP (kW)/rpm	15.5 (11.6) / 2300
	Displacement		cc	898
Dimensions	Overall length		mm	3710
	Overall height		mm	2330
	Overall width		mm	1300 / 990
	Min. ground clearance		mm	160
Hydraulic system	Pump capacity		ℓ /min	17.3 × 2 / 10.4 × 1 / 6.2 × 1
	Auxiliary hydraulic flow		ℓ /min	27.7
	Max. breakout force	Bucket / Arm	kgf	1630 / 840
Drive system	Travel speed	Low / High	km/h	2.2 / 4.0
	Max. traction force		kgf	2230
	Tumbler distance		mm	1230
	Crawler length		mm	1585
	Shoe width		mm	230
	Ground contact pressure		kgf/cm ²	0.26
Swing system	Unit swing speed		rpm	9.1
	Boom swing angle	Left / Right	degree	75 / 60
Blade	Dimensions	Width	mm	1300 / 990
		Height	mm	230
	Max. lift above ground		mm	230
	Max. drop below ground		mm	230
Hydraulic oil (reservoir / system)			ℓ	15.5 / 28
Fuel reservoir			ℓ	21
Operating weight (Including operator's weight 75 kg)			kg	1695

The company reserves the right to change the above specifications without notice. This brochure is for descriptive purposes only. Please contact your local Kubota dealer for warranty information.
For your safety, Kubota strongly recommends the use of a Rollover Protective Structure (ROPS) and seat belt for almost all applications.

DIMENSIONS



Unit: mm



For Earth, For Life
Kubota

KUBOTA COMPACT EXCAVATOR

KX

KX018-4

Groundbreaking performance. Ultra versatility.
Comfort in a compact environment.



*This information is sourced from overseas and may not necessarily apply locally. It is essential that you confirm specifications and other information with your local Kubota dealer.



©2020 Kubota Corporation

Kubota Australia Pty Ltd

25-29 Permas Way, Truganina VIC, 3029 Australia
Freecall: 1800-334-653
Email: sales@kubota.com.au

Web Site: <http://www.kubota.com.au>

Kubota New Zealand Limited

Freecall: 0800-582-682
Email: sales@kubota.co.nz

Web Site: <http://www.kubota.co.nz>

Kubota
Genuine Parts
for maximum
performance,
durability and
safety



Enhanced Digging Force

The KX018-4 delivers an impressive bucket digging force. Its powerful and well-balanced arm and bucket allow the operator to dig faster and more efficiently even in the toughest conditions.

Extraordinary Stability and Lifting Capacity

The KX018-4's superior stability is due to its long tumbler distance and wide variable track width. It enables you to safely perform jobs using a host of Kubota attachments. And Kubota's unique hydraulic system, together with a powerful boom cylinder, delivers the lifting power you need to broaden your range of lifting jobs. Combined, you get an advanced hydraulic system that automatically regulates and distributes the optimum amount of oil to each cylinder, based on the weight of the load for smooth, responsive and stable lifting capacity and overall operation.

Kubota Original Engine

The KX018-4 is powered by Kubota's impressive D902 engine. Engineered with the power to maximize digging and lifting performance. It also delivers minimized noise and vibration, and meets the latest engine emission regulation.



SUPERIOR PERFORMANCE

Kubota's new KX018-4 mini excavator raises the standard in the 1.5-2.0 ton category with a powerful digging force and a wider working range that rival higher-end excavators. And with enhanced accessibility to sites such as roadsides or residential areas, the KX018-4 gets the jobs done easier from large construction areas to the tightest of places.

**"Digging Force
Arm 6% UP
Bucket 2.5% UP"**

Short-pitched Rubber Crawler and Double-flanged Track Rollers

The KX018-4 features a short-pitched rubber crawler that minimizes vibration and double-flanged rollers that help improve stability and travel performance.

Wide Working Range

The KX018-4's working range is always hard at work for you. You get powerful and responsive working applications that are ideal for digging, lifting and loading. Plus, you'll get increased efficiency of our bucket capacity, digging depth and load over height, meeting or exceeding the latest requirements of today's construction sites.

ROPS and OPG (TOP Guard, Level I) Certified Cabin/Canopy

Lightweight for improved stability and certified for safety, the KX018-4's ROPS & OPG (TOP Guard, Level I) safety systems provide protection from falling debris or accidental rollovers.

Straight Travel

For added safety, Kubota's hydraulic system makes sure that you travel in a straight line even during simultaneous operation of the front boom, arm and bucket.



Variable track gauge

To optimize stability when using heavy attachments, the KX018-4 tracks can be expanded to a maximum of 1300 mm and retracted to 990 mm to make passing through narrow doorways and tight work possible. Either adjustment can be made in just seconds by operating the independent track gauge lever.



Auto-shift

The auto-shift system enables automatic travel shift from high to low depending on traction effort and terrain. This gives smoother operations when dozing and turning.

WORK IN COMFORT

The KX018-4 features a wider entrance, greater legroom and a deluxe seat. Operability is greatly enhanced with more easy-to-use features than ever before.

New Digital Panel

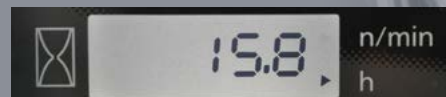
Following the excellence of Kubota's Intelligent Control System, the new digital panel puts convenience at the operator's fingertips. The user-friendly digital panel is positioned to the front right corner of the operator for better visibility, and features one-touch button operation to view the time, hour meter and tachometer. Warning lamps with code numbers on the display will alert you in case of emergencies such as overheating, hydraulic problems or low battery. With easier access, simpler settings, easy-to-read indicators and alerts, you'll always be aware of the excavator's functioning status.

1. Fuel Level Gauge
2. Water Temperature Gauge
3. Warning Lamps
(Overheating, Hydraulic, Battery)
4. LCD Display (Time, Hour, rpm)

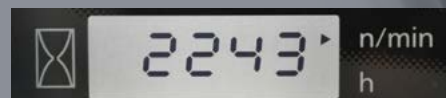
Time



Hour Meter



Tachometer



A. Fully Flat Floor

For added comfort, the floor is completely flat for greater legroom and a more spacious feel.

B. 2-speed Travel Switch

By placing the 2-speed travel switch on the dozer lever, dozing operations can be done faster and easier.



C. Cup Holder

With the convenience of a bigger cup holder, you can quench your thirst and work longer without leaving the seat.

D. Wrist Rest

A thoughtfully designed wrist rest enhances operation and reduces operator fatigue.

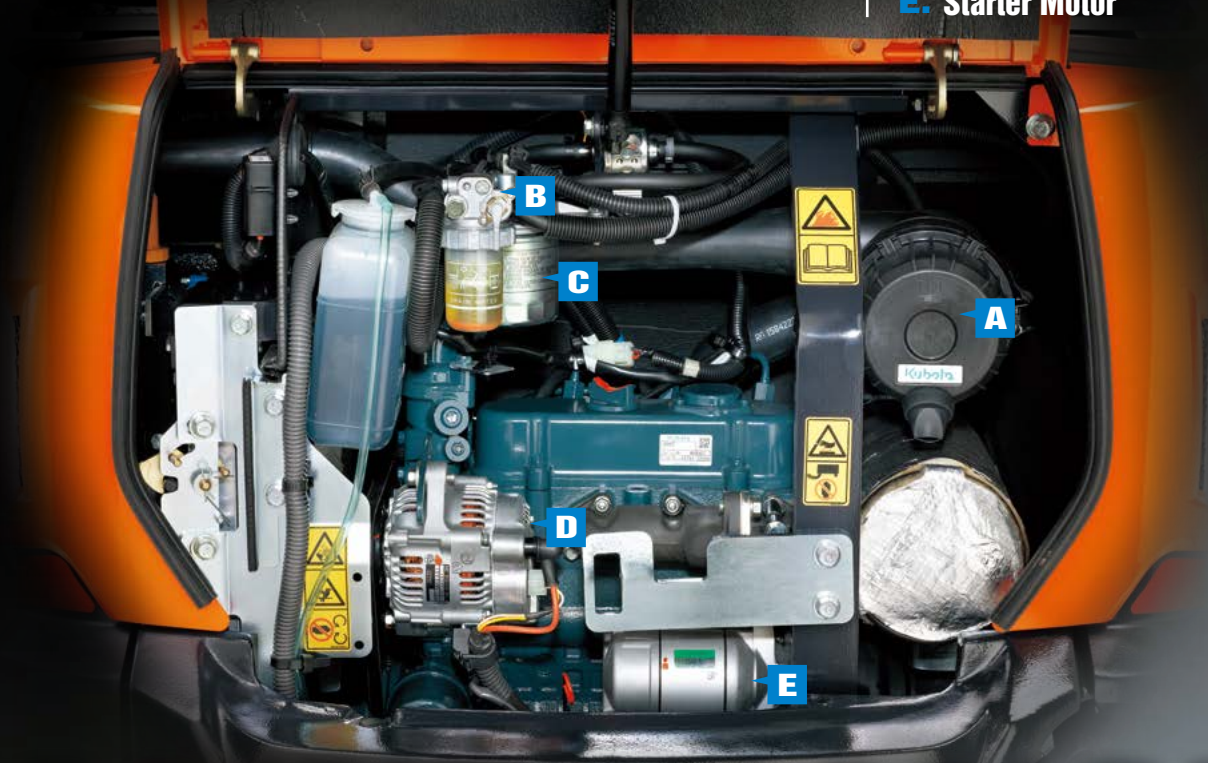
TPSS

The Two-Pattern Selection System positioned under the seat allows the operator to shift control styles conveniently while seated. A simple turn of a switch is all it takes to select between the ISO pattern and the SAE backhoe pattern.

Engine Maintenance

Kubota has made routine maintenance extremely simple by consolidating primary engine components onto one side for easier access. Engine and other vital components can be inspected quickly and easily.

- A. Dual Element Air Cleaner
- B. Water Separator
- C. Fuel Filter
- D. Alternator
- E. Starter Motor



MAINTENANCE & SAFETY

The KX018-4 offers added peace-of-mind with extremely high levels of safety and durability. Furthermore, Kubota simplifies inspections and repairs with easier accessibility to the major components.



Topside Boom Cylinder

For increased reliability when performing in hazardous conditions, including demolition jobs when a breaker is fitted, the boom cylinder has been positioned on the topside of the boom to prevent cylinder damage.



Integrated Travel Motor Hoses

Kubota has enclosed the travel motor hoses within the track frame for added protection.



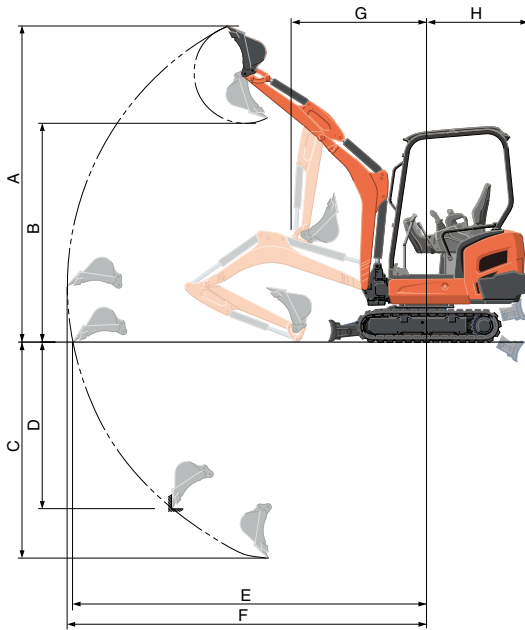
KX018-4 OPTIONS & EQUIPMENT

- Canopy lights



WORKING RANGE

Model		KX018-4
A	Max. digging height	mm 3460
B	Max. dumping height	mm 2380
C	Max. digging depth	mm 2380
D	Max. vertical digging depth	mm 2030
E	Max. digging radius, at ground level	mm 3860
F	Max. digging radius	mm 3920
G	Min. turning radius	mm 1480
	With swing	mm 1170
H	Min. tail turning radius	mm 1070



LIFTING CAPACITY

LIFT POINT HEIGHT (m)	LIFTING CAPACITY OVER THE FRONT, BLADE DOWN unit=kN					LIFTING CAPACITY OVER THE SIDE, TRACK WIDTH 1300mm unit=kN				
	LIFT POINT RADIUS (m)					LIFT POINT RADIUS (m)				
	1.0	1.5	2.0	2.5	3.0	1.0	1.5	2.0	2.5	3.0
2.5	-	-	-	2.6	-	-	-	-	2.6	-
2.0	-	-	-	2.5	-	-	-	-	2.5	-
1.0	-	6.5	4.3	3.5	3.0	-	6.5	4.3	3.1	2.4
0	-	6.1	5.8	4.1	3.1	-	6.1	4.0	2.9	2.3
-1.0	9.1	6.8	4.5	3.2	-	9.1	6.3	3.9	2.8	-
GL	-1.5	11.4	5.2	3.4	-	11.4	5.2	3.4	-	-

Machine with standard arm without bucket, rubber crawler, ROPS canopy and standard track width.

